

2017 HO CHI MINH CITY

**Establishing Safe, Comfortable
and Sustainable Society**

- Challenges Japan Faces as a Rapidly Aging Society -

**Shigemi Kitahara MD. PhD.
Director of Kitahara International Hospital**

Development of Healthcare Industry and Society

STAGE 1 (Medical Services in Emerging Countries)

- Establishment of equal medical services is the highest priority
- Establishment of domestically facilitated medical services is expected

STAGE 2 (Medical Services in Advanced Countries)

- Industrialization of medical services including exportation is required

STAGE 3 (Future-Oriented Medical Services)

- Less use of the extravagant high-cost machineries
- Establishment of medical service as a total life-support industry is the key

Medical Services as a Total Life-Support Industry (TLSI)

- 1. Healthcare in stage 3 society must become a TLSI which provides everything needed for safe, comfortable and healthy lives of people**
- 2. Large medical equipment and expensive medication will be used less**
- 3. Instead cost-effective medical technologies such as regenerative medicine, immunotherapy should be developed and used**
- 4. Also good relationship between people will be maintained to achieve stress-free society**
- 5. To establish stage 3 healthcare and to spread it to the world is the role of the developed countries**

What are Blue Zones??

A scenic view of a hillside covered in cherry blossoms and colorful flowers. The foreground is dominated by a dense carpet of pink and purple flowers, interspersed with yellow and red tulips. A stone wall runs across the middle ground. In the background, several cherry blossom trees in various shades of pink and white are in full bloom, set against a backdrop of lush green trees on a steep hillside under a clear blue sky.

Report by Dan Buettnner

Healthy Healthcare System

Healthcare as Total Life-Support Industry will be the key for prosperity.

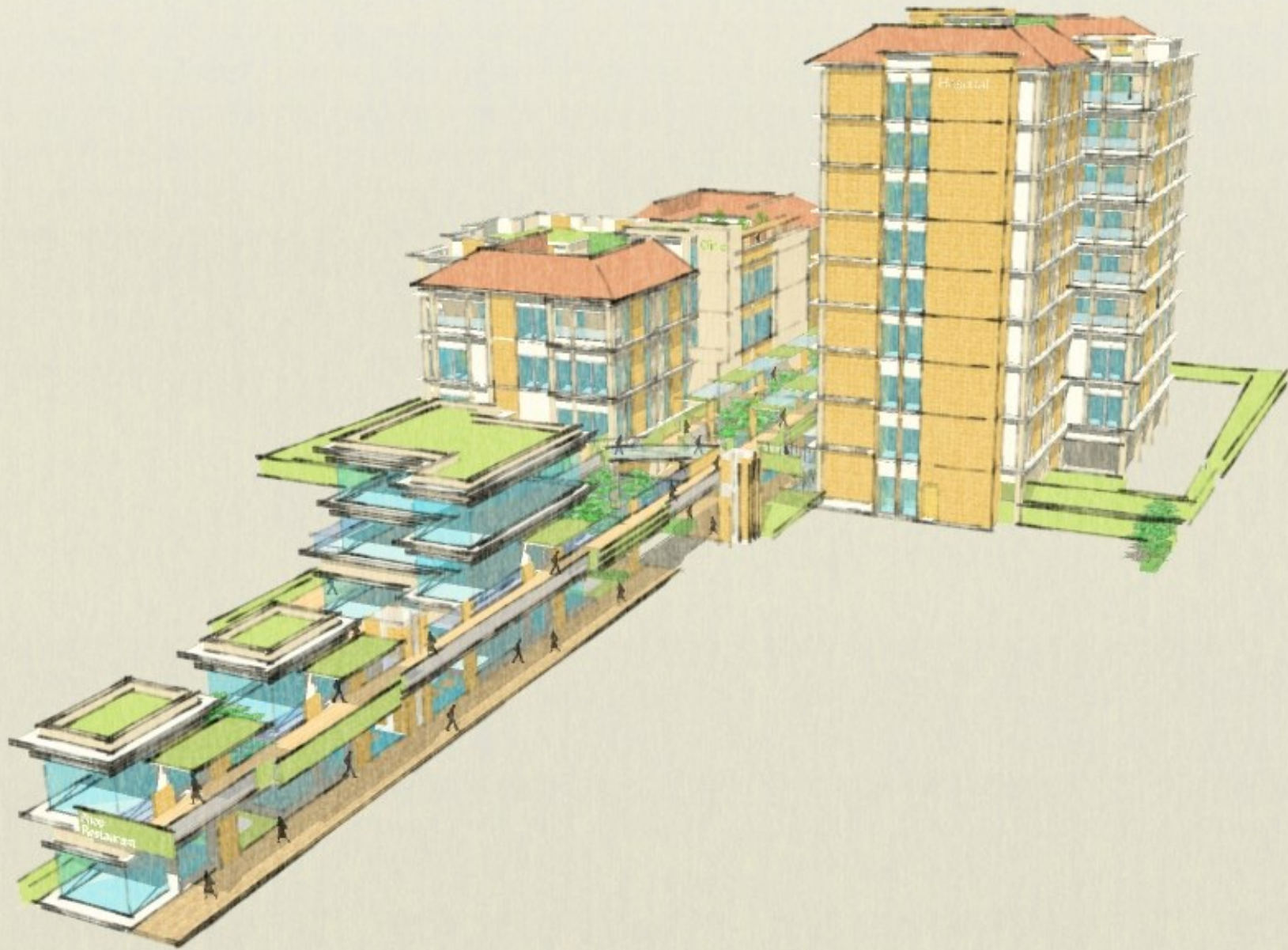
In order to do so, profitable domestically facilitated medical service is required.

What is truly needed is a basic healthcare and society where people can help each other.



Challenge of the Kitahara Group

Cambodia HHRD



Cambodia HHRD Project



RECEPTION



ANGIO
GRAPHY



Sunrise Japan Hospital
Phnom Penh

OPERATION
ROOM



RESTAURANT







Challenge of the Kitahara Group

Total Life Support System
& Healing Facilities

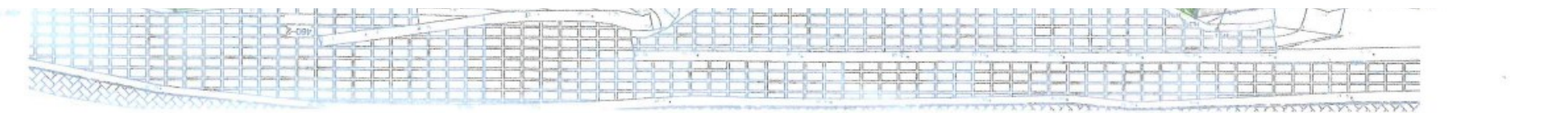
Total Life Support System

- Hospital provides the member all services needed in order for them to live their life to the fullest
- Member will join the system by recording the required information through “Digital Living Will” and opening an bank account
- “Digital Living Will” is much needed for the aging society

Harmony of nature, technology and humanity



Healing Facilities





Digital Hospital





SPA Building

1:10 附于SPA建筑
7:20 同比例 内一外





Total Life Support System & Digital Living Will

For Our Friends

Development of health care as Total Life-Support Industry is necessary to achieve peace and bring prosperity to Asia.

Let us work together to establish new system from Asia to bring peace, prosperity and happiness to the world.